

**Greenfield Cottages, Crook, DL15 8NJ**  
**2 Bed - House - End Terrace**  
**£700 Per Calendar Month**

**ROBINSONS**  
SALES • LETTINGS • AUCTIONS • SURVEYS

This attractive two bedroom end terrace house has been refurbished in recent years and finished to a modern standard throughout. The property is warmed by a gas combination boiler and has UPVC double glazed windows. The kitchen and shower room are fitted with contemporary fixtures and fittings, along with stylish decoration throughout.

One of the standout features of this house is the outside space, with an hard standing for a small vehicle and garage/workshop with electric, along with a easy to maintain rear garden.

The location of the property is great for tenants looking to have shopping amenities, health care facilities and bus links within a short walk away. The house is tucked away in a small cul-de-sac in Crook town centre.

The internal accommodation comprises; entrance hallway, shower room with walk-in shower enclosure with mains shower attachments. Spacious kitchen which is extensively fitted with a range of wall, base and drawer units with matching breakfast bar, space for appliances including range style cooker with extractor hood above, fridge/freezer and washing machine and dishwasher.

Sliding doors open to give access to the lounge with Bio oil stove, staircase to the first floor and French doors leading to the rear garden.

To the first floor there are two double bedrooms, both having furniture space and the rear bedroom having built in storage.

Outside the property has an enclosed garden to the front with gates opening to allowing parking for a small vehicle. Further gates open to the side of the house which then lead to the garage/workshop which has electric. The rear garden has been designed for easy maintenance and has a good degree of privacy.

**SPECIFICATIONS :** Pets considered ( subject to a pet rent of £25pcm)

#### **Agents Notes**

Property Construction – Standard

Number & Types of Rooms – Please refer to the details and floorplan, all measurements are for guidance only

Gas Supply - Mains

Electricity supply – Mains

Water Supply – Mains

Sewerage – Mains

Heating – Gas Central Heating

Estimated Mobile phone coverage – Please refer to the Ofcom

Website - <https://www.ofcom.org.uk>

Estimated Broadband Download speeds – please refer to the Ofcom Website – <https://www.ofcom.org.uk>

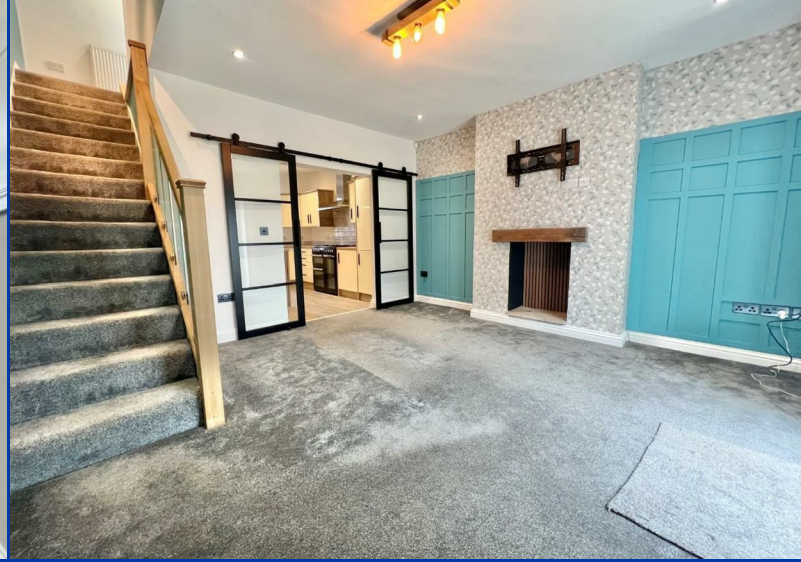
Selective licencing area – Yes

Council Tax: Durham County Council, Band A - Approx. £1701 p.a

**Disclaimer:** Our details have been compiled in good faith using publicly available sources and information obtained from the landlord prior to marketing. Verification and clarification of this information, along with any further details concerning Material Information parts A, B & C, should be sought from a legal representative or appropriate authorities before making any financial commitments. Robinsons cannot accept liability for any information provided subsequent amendments or unintentional errors or omissions.

#### **REDRESS**

For Redress we subscribe to the Property Redress Scheme (PRS) – Premiere House, 1st Floor, Elstree Way, Borehamwood, Hertfordshire WD6 1JH



# OUR SERVICES

Mortgage Advice

Conveyancing

Surveys and EPCs

Property Auctions

Lettings and Management

Strategic Marketing Plan

Dedicated Property Manager

## Greenfield Cottages Crook

Approximate Gross Internal Area  
795 sq ft - 74 sq m



GROUND FLOOR

FIRST FLOOR

SKETCH PLAN FOR ILLUSTRATIVE PURPOSES ONLY

All measurements walls, doors, windows, fittings and appliances, their sizes and locations, are approximate only. They cannot be regarded as being a representation by the seller, nor their agent.

Produced by Potterplans Ltd. 2025

Energy Efficiency Rating	
Current	Potential
Very energy efficient - lower running costs	
(92 plus) A	86
(81-91) B	
(69-80) C	
(55-68) D	
(39-54) E	
(21-38) F	
(1-20) G	
Not energy efficient - higher running costs	
EU Directive 2002/91/EC	
England & Wales	

### DURHAM

1-3 Old Elvet  
DH1 3HL

T: 0191 386 2777 (Sales)

T: 0191 383 9994 (option1) (Lettings)

E: info@robinsonsdurham.co.uk

### DURHAM REGIONAL HEAD OFFICE

19A old Elvet  
DH1 3HL

T: 0191 383 0777

E: info@robinsonsdurham.co.uk

### CHESTER-LE-STREET

45 Front Street  
DH3 3BH

T: 0191 387 3000

E: info@robinsonscs.co.uk

### BISHOP AUCKLAND

120 Newgate Street  
DL14 7EH

T: 01388 458111

E: info@robinsonsbishop.co.uk

### CROOK

Royal Corner  
DL15 9UA

T: 01388 763477

E: info@robinsonscrook.co.uk

### SPENNYMOOR

11 Cheapside  
DH16 6QE

T: 01388 420444

E: info@robinsonsspenny Moor.co.uk

### SEDFIELD

3 High Street  
TS21 2AU

T: 01740 621777

E: info@robinsonssedgefield.co.uk

### WYNYARD

The Wynd  
TS22 5QQ

T: 0174 064 5444

E: info@robinsonswyny ard.co.uk

Every care has been taken with the preparation of these particulars, but they are for general guidance only and complete accuracy cannot be guaranteed. If there is any point, which is of particular importance please ask or professional verification should be sought. All dimensions are approximate. The mention of fixtures, fittings &/or appliances does not imply they are in full efficient working order. Photographs are provided for general information and it cannot be inferred that any item shown is included in the sale. These particulars do not constitute a contract or part of a contract.

Robinsons can recommend financial services, surveying and conveyancing services to sellers and buyers. Robinsons staff may benefit from referral incentives relating to these services.



# ROBINSONS

SALES • LETTINGS • AUCTIONS

Royal Corner, Crook, County Durham, DL15 9UA | Tel: 01388763477 | info@robinsonscrook.co.uk

www.robinsonsestateagents.co.uk